



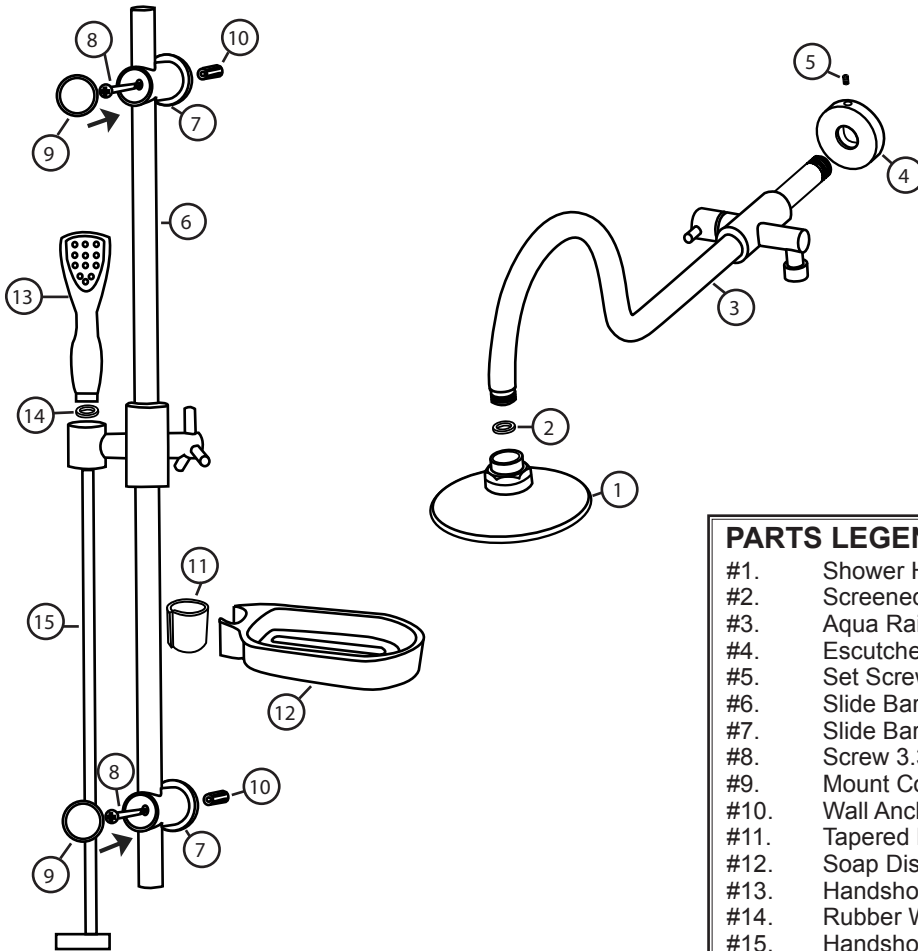
# PULSE

SHOWERS PAS

## Aqua Rain Shower System Installation Instructions Model #1019



## Aqua Rain Shower System Numbered Components



### PARTS LEGEND

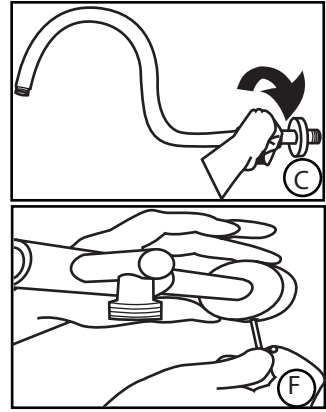
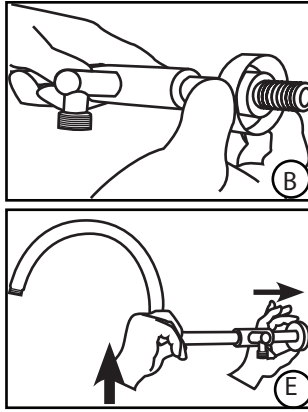
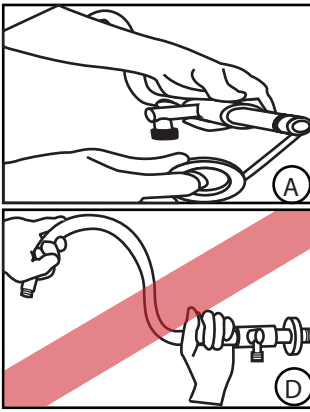
- |      |                          |
|------|--------------------------|
| #1.  | Shower Head              |
| #2.  | Screened Washer          |
| #3.  | Aqua Rain Body           |
| #4.  | Escutcheon               |
| #5.  | Set Screw                |
| #6.  | Slide Bar                |
| #7.  | Slide Bar Mounts (2 qty) |
| #8.  | Screw 3.375" (2 qty)     |
| #9.  | Mount Covers (2 qty)     |
| #10. | Wall Anchors (2 qty)     |
| #11. | Tapered Nylon Sleeve     |
| #12. | Soap Dish                |
| #13. | Handshower               |
| #14. | Rubber Washer            |
| #15. | Handshower Hose          |

**Thank you for choosing the #1019 AquaRain Shower System by PULSE Showerspas!**

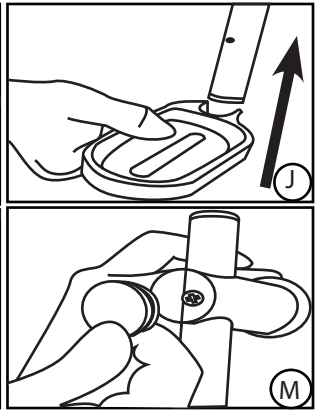
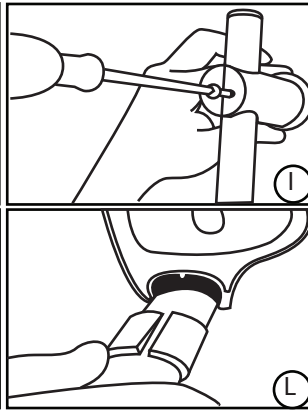
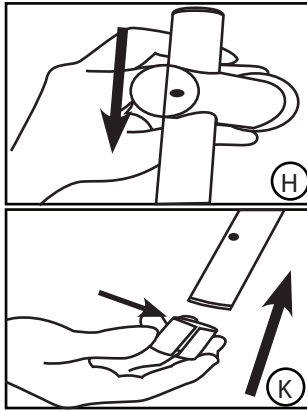
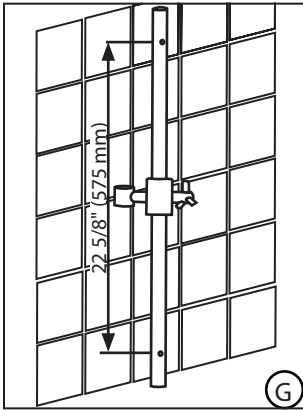
The assembly and installation of the AquaRain Rain Shower System is designed to be quick and easy. If you have any installation questions or performance problems, call PULSE Customer Service toll free at 888-785-7320 or visit [www.pulshowerspas.com](http://www.pulshowerspas.com) for more information.

Please read instructions carefully, become familiar with all parts installation procedures and tools required. Follow the steps in the order presented to help avoid any mistakes.

Tools required: Drill (preferably cordless), (1/4") 6mm masonry/tile drill bit, Philips screw driver, pipe wrench.



1. Remove existing shower head and shower arm.
2. Wrap threads of shower pipe with Teflon tape and/or pipe sealant to ensure no leaks. (Diagram A)
3. Slide escutcheon over threaded shower pipe. (Diagram B)
4. Insert threaded pipe into female wall fitting and tighten securely. Use the diverter body to tighten by hand or pipe wrench on inlet pipe (nearest the wall, see diagram C). **Caution:** Do not use shower arm (Diagram D) to tighten.
5. While gently pushing up on connection between Shower arm and top tee to ensure Aqua Rain is level, slide escutcheon against wall (Diagram E) and secure set screw. (Diagram F) **Caution:** Do not over-tighten set screw.
6. Insert Rubber washer in shower head and secure shower head to shower arm.



1. Hold Adjustable Slide Bar (6) in desired mounting location. Evaluate range of adjustment and potential interference of handshower hose (15) (Diagram G).
2. Mark wall for two mounting holes. Before drilling ensure no live plumbing could be damaged.
3. Slowly drill 1/4" (6mm) wide by 1" (25mm) deep holes 22 5/8 inch (575mm) apart. Make sure holes are plumb. **IMPORTANT:** supplied anchors are for solid surface only i.e. tile, marble etc. If mounting to hollow or fiberglass wall a different anchor/screw and hole size may be required.
4. Insert wall anchors (10) until flush with wall. Slide top mount (7) over slide bar (Diagram H) and secure with screw (8) (Diagram I). Slide plastic soap dish (12) (Diagram J) onto slide bar followed by narrow end of tapered nylon sleeve (11) (Diagram K). Align tab on soap dish with slot on sleeve and push soap dish down until flush. (Diagram L)
5. Slide lower mount (7) over slide bar and secure with screw (8).
6. Press covers (9) into mounts (7) (Diagram M).
7. Place washer (14) in hex head of hose (15) and connect to diverter outlet. Place washer (14) in smooth end of hose and connect handshower (13). Place handshower into holder.



## **Manufacturer's Warranty**

PULSE Showerspas, Inc. warrants that all Showerspas are free from defect in workmanship and/or materials for a period of three years from the date of purchase. This warranty extends to the original purchaser only and is non-transferable.

This warranty does not cover, and PULSE Showerspas will not pay for conditions, malfunctions or damages resulting from (1) normal wear and tear, improper installation, whether performed by a contractor, service company or the consumer, improper maintenance, misuse, abuse, negligence, accident or alteration; (2) the use of abrasive and/or caustic cleaning agents or "no-rinse" cleaning products or the use of the product in any manner contrary to the product instruction; or (3) conditions in the home such as excessive water pressure or corrosion.

Should any Showerspa be determined by PULSE Showerspas, Inc. to be defective in normal residential use, at the option of PULSE Showerspas, Inc., such product shall either be replaced or repaired and returned to the customer free of defects. The consumer shall give notice of any defects to PULSE Showerspas, Inc. within thirty days of discovery of such defect.

Proof of purchase (original sales receipt) must be provided to PULSE Showerspas, Inc. with all warranty claims. PULSE Showerspas, Inc. is not responsible for labor charges, removal charges, installation or other consequential costs. In no event shall the liability of PULSE Showerspas, Inc. exceed the purchase price of the Showerspas.

Some states/provinces do not allow limitations of how long an implied warranty lasts or the exclusion or limitation of such damages, so these limitations and exclusions may not apply to you. This warranty gives the consumer specific legal rights. You may also have other rights that vary from state/province to state/province.

Follow manufacturers recommended installation. Use caution with children under ten years of age. Do not use Showerspa as a support device. Do not use harsh chemicals or abrasives when cleaning. Turn water supply off when servicing Showerspas.